



When Disaster Strikes: A Guide to Manage, Recover & Prepare

*Kim Bybee, Athletics Manager
Mason Ward, Athletics Maintenance Supervisor*

Where Connections Happen



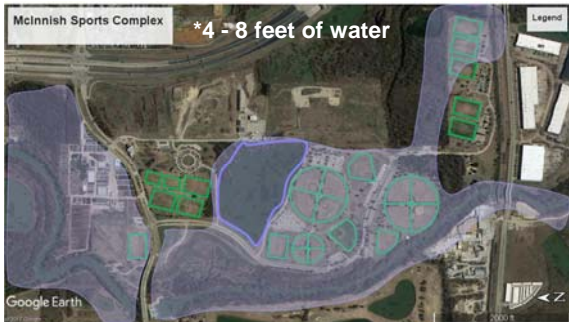
Disaster in Photos



McInnish Sports Complex

Google Earth

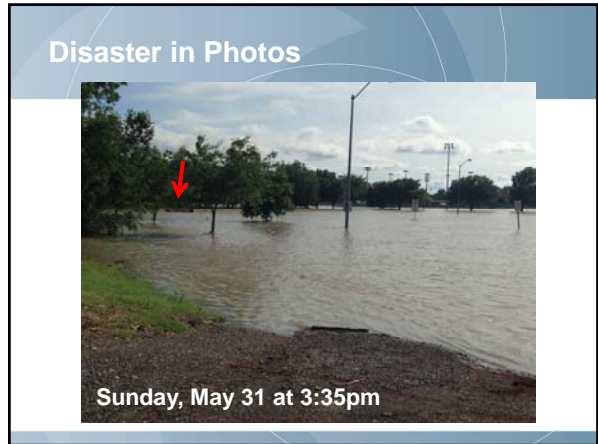
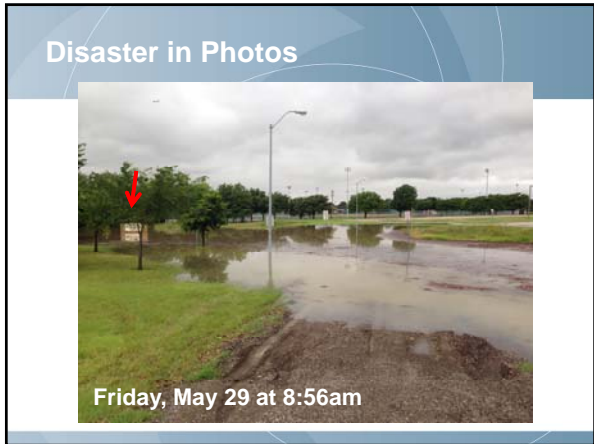
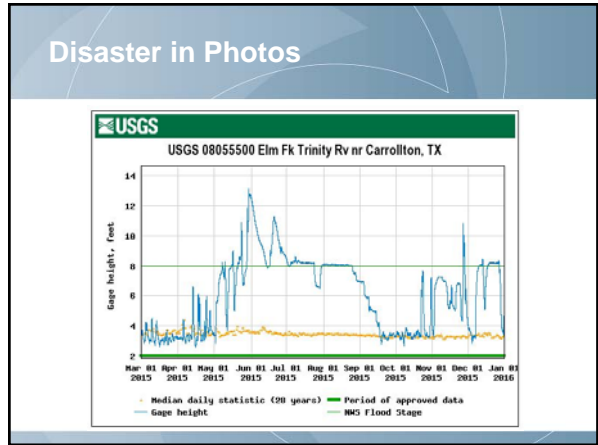
Disaster in Photos



McInnish Sports Complex

*4 -8 feet of water

Google Earth



Disaster in Photos



Disaster in Photos



Disaster in Photos



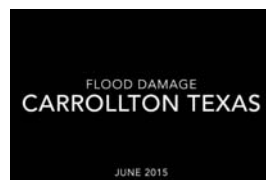
Disaster in Photos



Disaster in Photos



Disaster in Photos



[Video from June 2015](#)

When Disaster Strikes

How to deal with disaster in the moment

- Grab What You Can and Head for High Ground
- Limit Accessibility
 - Block access points or roads
 - Notify police and/or fire
 - Focus on safety
- Communication
 - Mayor/City Council
 - Social Media
 - Leagues/Participants

When Disaster Strikes

Recovery 101: Where to start and how to rebuild

- Safety
 - PPE (gloves, masks, bug spray, boots, etc)
 - Know your facility
- Document, Document, Document
 - Photos and lists of damaged property
 - Track staff time, equipment used, purchases
 - Spreadsheet or software program
 - Emergency or Risk Management Departments for FEMA and Insurance requirements
 - Too much documentation is never a bad thing

When Disaster Strikes

You can't always prevent, but you can prepare

- Early Notification
 - Know your facility and it's limits
 - Notification systems
- Financial Plan and Implications
 - Inventory everything
 - Understand policies & procedures

Questions?

FIRE!!!

**Lessons Learned
At
USC Upstate**

Bruce Suddeth, Director Landscape Services




What, When, Where

USC Upstate Sports Turf Facility

February 6, 2010 3:30 am

Spartanburg, SC

Building Structure

- 24' x 50' w/ 2 Garage Bays
- Concrete Floor
- Three Room Modification for Office, Meeting/Break Area, and Chemical Storage
- Compressed Air Throughout
- Data Communications Service
- Flammable Storage
- Exhaust/Ventilation

Sports Turf



Timeline of Incident Notification

February 6

- 3:30 am Police Notified by Student
- 3:40 am North Spartanburg FD Arrives
- 3:45 am Police Chief and Vice Chancellor Notified
- 4:00 am Ground Superintendent Notified
- 4:10 am Director Landscape Notified
- 4:18 am Assistant PD Chief/Investigator Notified
- 5:15 am Sports Turf Manager Notified
- 5:30 am Sptbg County Arson Investigator Notified
- 6:00 am Facilities Director Notified
- 8:00 am Risk Manager and Chief Financial Officer Arrives
- 10:00am Assistant PD Chief Returns for Daylight Photos

Initial Fire Scene Observations

- Initial Night Observations:
 - Loss of Four Equipment Pieces
 - Total Roof Loss
 - Anything Plastic Destroyed
- Three Foot Heat Line
- Fuel Cans Not Stored in Flammable Cabinet

Suspected Origin



Skylights Provided Ventilation



Mower Plastic Damage



Four Stihl Blowers



Office Area with Little Damage



Sprayer Destroyed



Workman Plastic Melted



Persons/Departments/Companies

- University Police Department
- Facilities Management
- Risk Management
- Insurance Company
- Spartanburg County Police Department
- North Spartanburg Fire Department
- Smith Turf/Golf Cart Sales/Owens Equipment
- Simmons Irrigation
- Arson Investigator
- USC Project Management

Insurance Company Requests

- Equipment Inventory Spreadsheet
- Building Content Spreadsheet
- Replacement Quotes
 - Building
 - Content
 - Equipment
 - Demolition

Equipment Supplier Notes

- Work Closely With Suppliers
- Discuss Options Prior to Disaster
- Know What Can and Cannot Be Accomplished
- Know Workings of Purchasing System
- Evaluate for Each Season

Equipment Spreadsheet

EQUIPMENT	SERIAL NUMBER	Current Estimated Market Value as damaged/salvage units	Current Market Value*
Damage			
Frontend Cutter Mower Grasshopper	5217634	Cosmetic and mechanical from intense heat	\$2,500.00 \$6,800.00
Reelmaster 3100D Sidewinder Toro	260000473	Cosmetic and mechanical from intense heat	\$3,500.00 \$14,000.00
Groundmaster 3500D Toro	270000349	Cosmetic and mechanical from intense heat	\$5,500.00 \$15,500.00
Mower Groundmaster 7210/72" Toro	270000224	Cosmetic and mechanical from intense heat	\$4,500.00 \$9,000.00
Utility Vehicle Workman 3200 Toro	270000468	Cosmetic and mechanical from intense heat	\$1,500.00 \$9,500.00
Utility Vehicle Workman 2110 16HP Toro	260000660	This unit was a total loss due to direct fire contact	\$0.00 \$7,500.00
Sprayer 1250 Multipro Toro	220001045	This unit was a total loss due to intense heat	\$0.00 \$12,000.00
Toro Line Painter	260000549	Cosmetic and mechanical from intense heat	\$250.00 \$2,900.00
Toro Greensmaster 1600	230000456	Cosmetic and mechanical from intense heat	\$800.00 \$2,900.00
Club Car Turf CarryAll 2	RG0813-885313	Cosmetic and mechanical from intense heat	\$1,200.00 \$2,200.00

Equipment Replacement Quotes

- Assess Values of Current Equipment
- What Percentage Does Insurer Cover
- Maintain Clean Equipment
- Have Information Readily Available
- Spreadsheet and Document Equipment Status

Contents Spreadsheet

No.	Description of Item	Purchased or Obtained from:	Source or Verification	Age / date of purchase	Replace. Cost	Actual Cash Value	Policy Limit
1	White Paint, Sgl, (Qty 12)	Burnett Athletics	Invoice	8/25/2009	\$610.56	\$610.56	\$610.56
2	10 gal 12 Volt Herbicide Sprayer	Northern Tool	Catalog	8 Months	\$115.00	\$115.00	\$115.00
3	DeWalt 18V Sawsall/Battery/Charger	Lowe's	Store Price	1 year	\$214.99	\$214.99	\$214.99
4	Tape Measure, 300Ft	Beacon Athletics	Invoice	3/9/2009	\$69.00	\$69.00	\$69.00
5	Electrical Cord Reels (Qty 4)	Lowe's	Store Price	1 year	\$40.00	\$40.00	\$40.00
6	Paint String, 1000Ft	Lowe's	Store Price	1 year	\$20.00	\$20.00	\$20.00
7	Spartans Logo Template	Burnett Athletics	Invoice	9/3/2008	\$457.50	\$457.50	\$457.50

Equipment Options & Salvage

- Damage Assessment
- Repair Versus Replacement
- What Damages are Tolerable
- Insurance Claim Settlement Value

Equipment Needs/Rental

- Minimum Equipment to Operate
- Needs Change – Season Dependent
- How to Fund
- Emergency Expenditure Plan

Getting Work Done W/O Shop

- Moved to Main Campus Ornamental Shop
- All Gas Carts and Equipment Moved Outside
- Outside Buildings Erected for Carts
- Tent – Might Work for You
- Teamwork and Understanding
- Notify Athletic Field Customers
- Modify and Simplify for Efficiency
- PATIENCE!!!

What Went Right

- Student Reporting Fire
- Police and Fire Department Response
- Equipment Information Spreadsheet
- Arson Investigator Response
- Insurance Claims Adjuster Response
- Various Supplier Response
- USC Project Management Planning
- Skylight Ventilation

What Went Wrong

- Flammables Not in Flammable Cabinet
- Flammable Cabinet NOT Closed
- Contact Phone List Not Accurate
- Access Not Documented (Cameras)
- Keys in Ignition
- Fuel Can in Cart Seat
- Insurance Payment Delay

Flammable Cabinet



Safety Measures

- Flammable Storage
- Fire Alarms
- Cameras
- Motion Detectors
- Fire Protection System (Sprinklers)
- Key Box
- Access Control

Lessons Learned

- Insurance Procedures
- Equipment Placement
- Flammable Storage
- Building/Compound Security
- Trust in System and People
- Inventory EVERYTHING!!

Safety Inspections & Records Current

- Perform Full Inspections of Building
- Perform Full Inspections of Equipment
- Perform Full Inspections of Supplies
- Document Findings
- Discuss Findings at Regular Safety Meeting
- Act On and Improve Findings
- Processes Above are Perpetual

Equipment Documentation

- Inventory EVERYTHING!!!
 - Have Serial Numbers and Costs
 - Product Name/Description
 - Vendor Information
 - Date of Purchase
- Perform Inventory Updates Regularly
- Communicate Inventory Updates

Future Solutions

- Break Barriers
- Develop Mutual Aid Agreements
- How Do We Work Together ?
- Planning for the Worst Results in the Best

**Thank you
&
Discussion?**